

labmodul

SYSTEM PERFORMANCE



# SYSTEM PERFORMANCE

- Flexible and changeable
- Future-orientated and suited for all purposes
- High quality for daily use
- Designed for GMO facilities
- Smart design
- Ergonomically adjustable
- Easy to clean



## SYSTEM PERFORMANCE

PERFORMANCE is a furniture system with no supporting legs, designed to provide the highest degree of flexibility as well as covering future demands. The system is compatible with our other system solutions.

All constructions are thoroughly tested and the furniture system is made by resistant and robust materials to secure a durable solution suitable for many years of daily use.

Furthermore, the materials are carefully chosen in regard to recycling and sustainability.

The PERFORMANCE furniture system secures an exceedingly easily cleaning friendly laboratory that meets all regulative requirements for cleanroom and GMO classifications



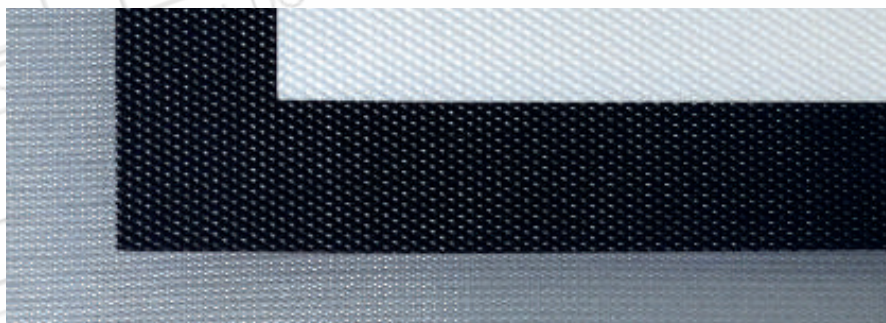
## A wide selection

Performance offers a wide range of different worktop and front materials to choose from along with different types of hinges and drawer handles to fit the desired cabinet function precisely.

Drawers are delivered with 80 % soft close pull-out as standard or with 110 % soft close pull-out.

The base cabinets are mounted hanging in runners and can easily be moved by pulling the cabinet sideways

The flexibility allows for the establishment of sitting and working places as well as situating equipment beneath the worktop exactly where you need it.







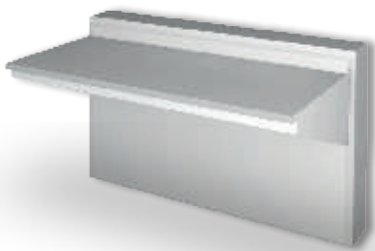
## Excellent ergonomics

The modular sections provide a continuously and ergonomically correct adjustment of the worktops for each user or task. The sections can further be removed in case of a future need for extra space for larger equipment and devices.

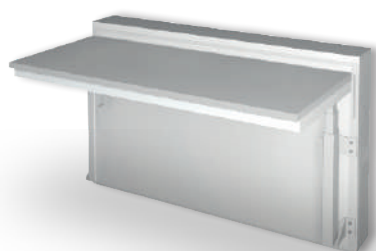
The tabletops are offered with height-adjustability.

The height-adjustability systems come in 2 versions:

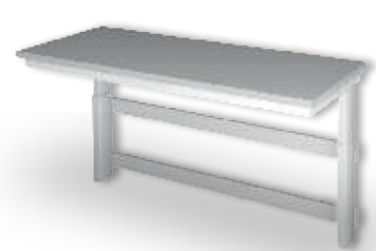
- Hidden actuators with a height adjustable distance of 75 to 91 cm
- Visible actuators with a height adjustable distance of 70 to 110 cm



Hidden actuators built in the panel module. Carries 120 kg



Visible actuators built in the panel module. Carries 130 kg



Wall module with visible actuators. Carries 125 kg



## Service Bridges

The service bridges/panels have built-in working light that illuminates the worktops with a convincing 900 lux. The distribution of the light above the worktops creates a clear and comfortably lit working area.

The lighting fittings have tight-fitting transparent lids for easy and efficient cleaning.

The service bridges/panels are offered in two versions- a low model with horizontal plugs and a high model with vertical plugs.

The low model maximises between opposite working areas.

The high model gives easy access to the plugs and is advantageous where equipment is often plugged in or out.

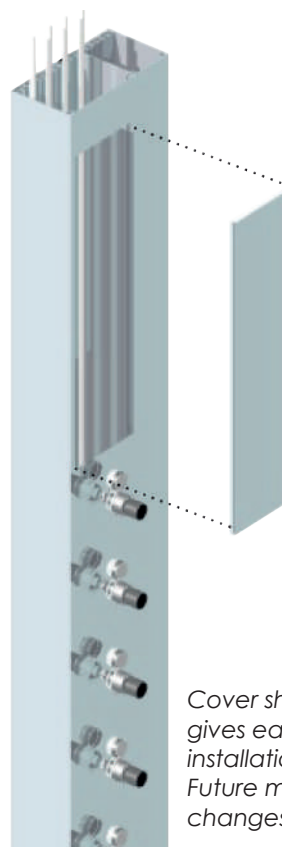


## Installations

Both models are prepared for additional mounting of extra outlets.

The service bridges/panels are delivered with all technical installations and outlets for power and plumbing ready for use.

The installations end in a chosen pick-up point for quick and easy connection to the building's installations.



*By utilizing the combinations units between 1 and 2 module cover plates, in conjunction with the movable cover can technique tower simply and flexibly meet a variety of functional requirements and configurations.*

*Cover sheets removability gives easy access during installation and servicing. Future modifications / changes are made easy.*





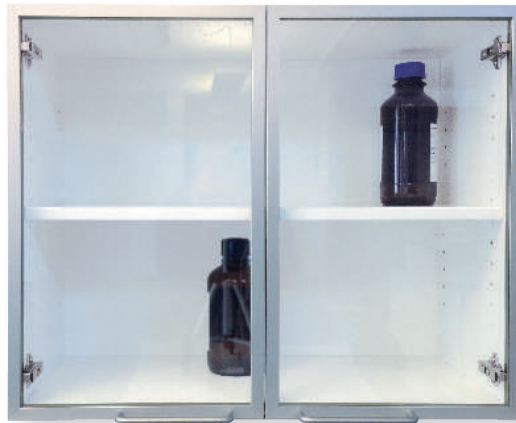
## Fronts

- Heighpressure laminate
- Compact laminate
- Linolium
- Corian



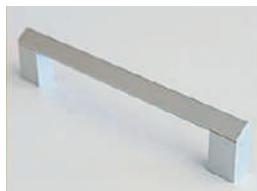
## Glass cabinet fronts

- Natural anodised 20 mm aluminum frame with 110° hinges
- White powder coated 20 mm aluminum frame with 110° hinges
- Laminate 60 mm frame with 270° hinges
- Laminate 60 mm frame concealed 110° hinges



## Handles

- Standard logistics aluminum handles with inclined surface for example Dymo strips. Width 190 mm
- Handle in brushed stainless steel. Width 160 mm
- Handle in matt aluminium. Width 160 mm



## Countertops

### Material options

- Laminate
- Compact laminate
- Stainless steel
- Corian
- Glass

### Laminate colors

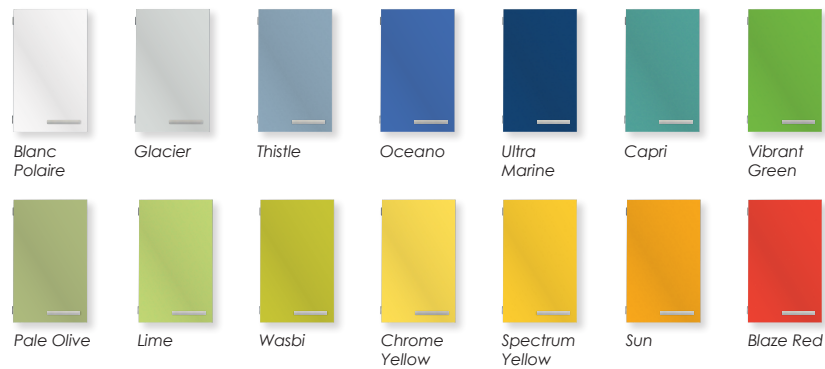


## Fronts

### Materials

- Laminate
- Compact laminate
- Corian

### Laminate colors



## Plinths

Two standard colors

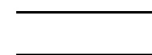
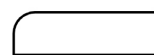
### Laminate colors



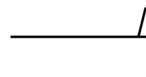
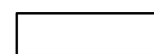
## Tabletop profiles

### Front edge

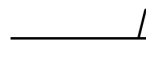
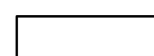
### Rear edge



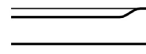
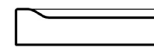
Postform



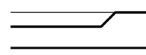
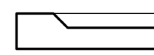
Compact laminate with Alu upturned edge



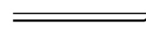
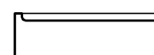
Trespa + laminate with Alu upturned edge



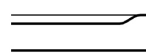
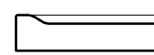
Stainless steel, with bead



Epoxy Resin with bead



Polypropylen with bead



Ceramic with bead





## Accessories for Service Bridges

The unique bridge is prepared for various mounting solutions that intelligently indemnify the desktop for other tasks. The suspensions can be moved throughout the length of the bridge so that the desired function is at your fingertips



**TOWEL HOLDER**  
Aluminium finish, width 570 mm



**MOUNTINGS STAND**  
Aluminium finish, width 380 mm



**PAPERTOWELHOLDER**  
Aluminium finish, W352 x D150 x H255 mm



**PAPERTOWELHOLDER - 3 levels**  
Aluminium finish, W352 x D150 x H305 mm



**KNIFE HOLDER**  
Aluminium finish, W380 x D80 x H370 mm



**UNIVERSAL SHELF**  
Aluminium finish, W440 x D150 x H275 mm



**DOUBLE SHELF**  
Aluminium finish, W380xD80xH275 mm



**DOCUMENT HOLDER**  
Aluminium finish, W440 x D74 x H320 mm



**DEVIDER HOLDER**  
Aluminium finish, W380 x D190 x H255 mm

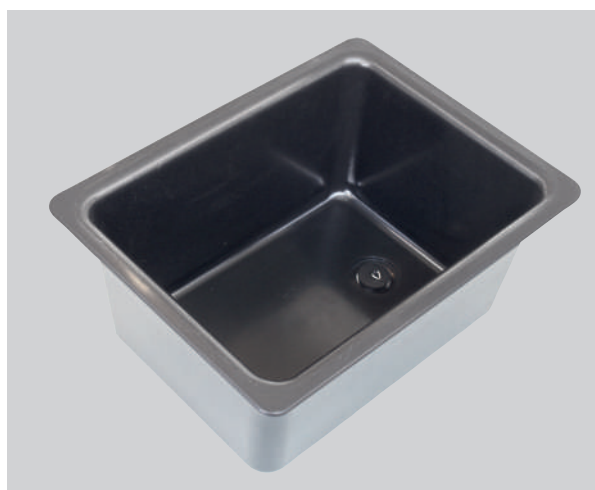
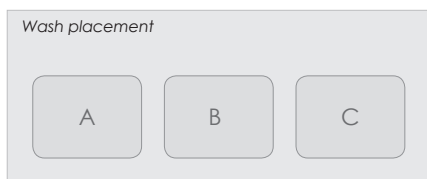


**WASH RACK**  
Aluminium finish, W380 x D80 x H370 mm



**CUP HOLDER**  
Aluminium finish, W147 x D150 x H335 mm, Incl. cup Ø147 mm

## Sink worktops



### Polypropylene sinks

PPDK1	265x117x185 mm, Drip cup
PPDK2	Ø170x115 mm, Drip cup
PP320	320x320x200 mm
PP400	400x400x250 mm
PP500	500x400x250 mm
PP600	600x400x250 mm

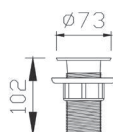
## Worktop materials

- High-pressure laminate
- Compact laminate
- Polypropylene (PP)
- Epoxy Resin
- Acid resistant stainless steel ASI316
- Ceramics



### Ceramic sinks

KKDK1	Ø105x112 mm, Drip cup
KKDK2	250x95x112 mm, Drip cup
KK400	400x400x250 mm
KK500	500x400x250 mm
KK600	600x400x250 mm

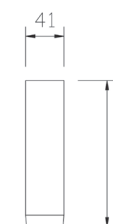


Drain plug 97B0070P



### Epoxy Resin sinks

S497	150x70x108 mm, Drip cup
S499	229x76x134 mm, Drip cup
S1000	250x125x150 mm, Drip cup
SDS5-DI	300x200x200 mm
SA5-DI	356x254x152 mm
SN9-DI	406x305x203 mm
SGL 10-DI	400x400x300 mm
SM8-DI	450x365x200 mm
SEL 16-DI	600x450x300 mm
SVL15-DI	635x381x254 mm

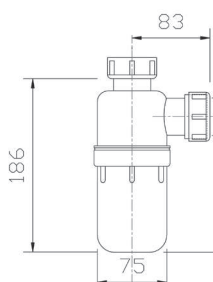


Overflow pipe 158mm 97B0158



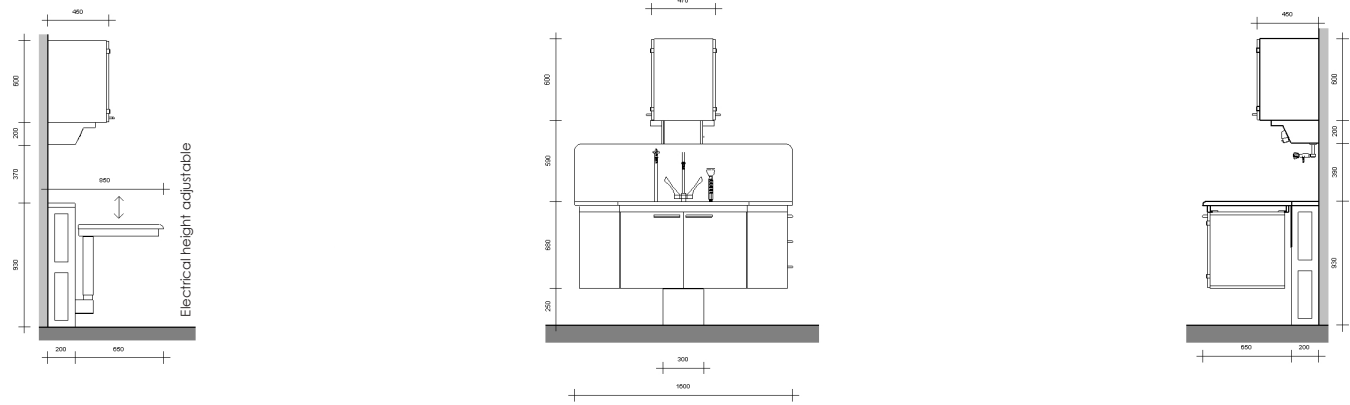
### Stainless steel sinks

TR100	Ø100 mm round Funnel
TR150	Ø150 mm round Funnel
DK130	Ø130mm round Drip cup
DK250	250x150x100 mm, Drip cup
A340	340x300x200 mm
A400	400x340x145 mm
A480	480x340x180 mm
A500	500x400x160 mm
A600	600x400x200 mm



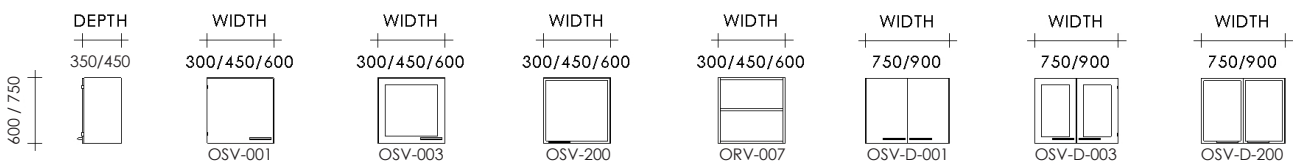
Water trap 97B0080

# Product Information

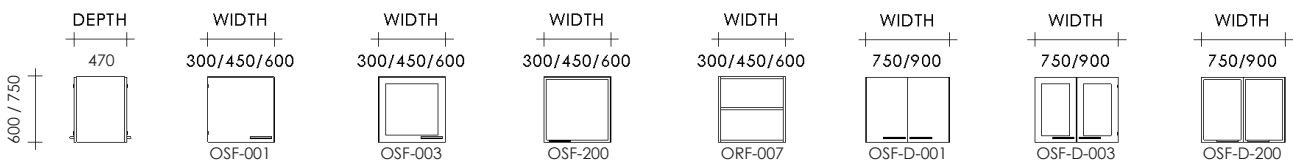


## Cabinets

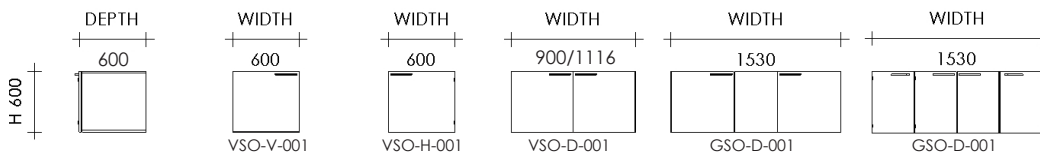
### Top cabinet - Wall hanging



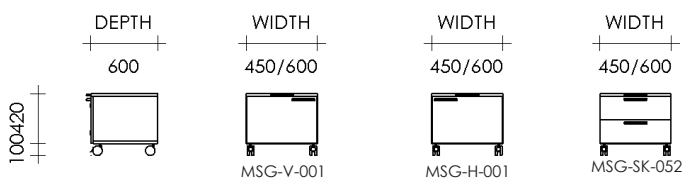
### Top cabinet - Free standing



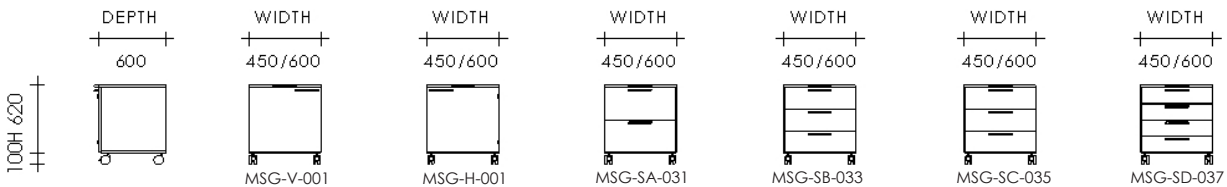
### Suspended under bench sink cabinet



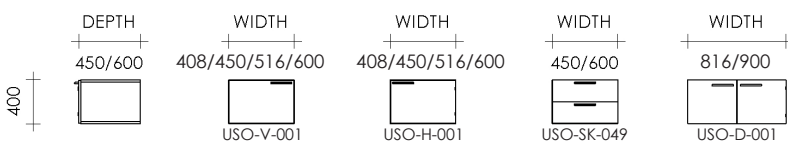
### Mobile units - low



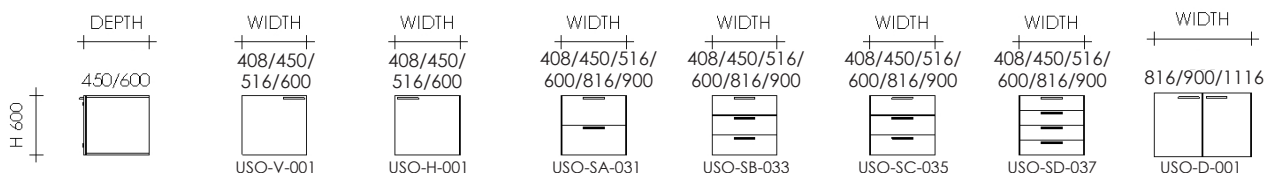
### Mobile units - high



### Suspended under bench cabinet - low



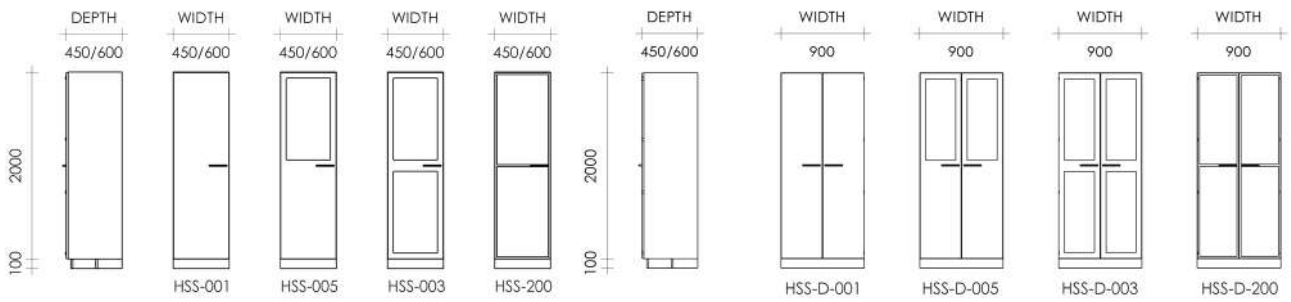
### Suspended under bench cabinet - high





# Tall storage cabinets

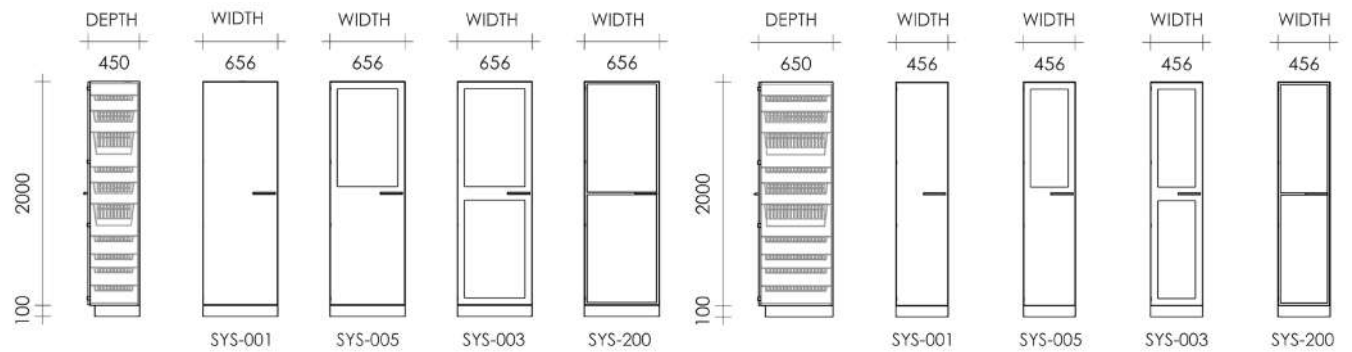
## Storage cabinets HSS



## Adjustable shelves



## Storage cabinets system 60/40 for trays and baskets



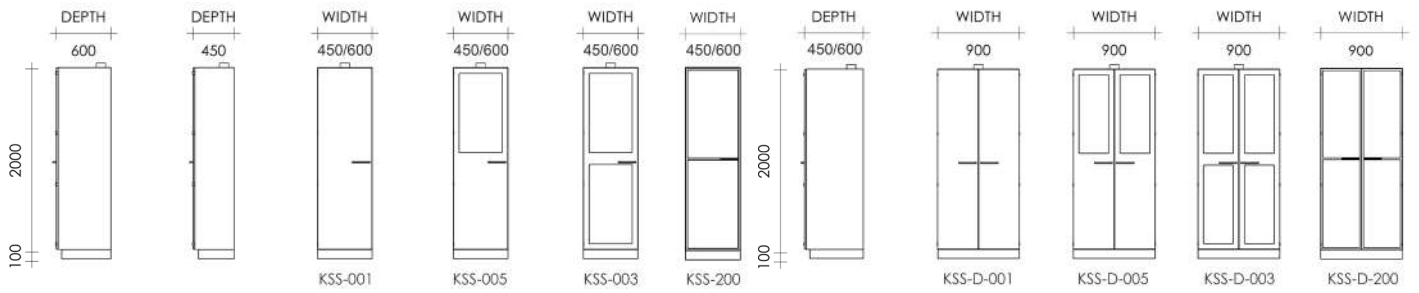
## Trays and baskets



See the selection of trays and baskets in a separate brochure



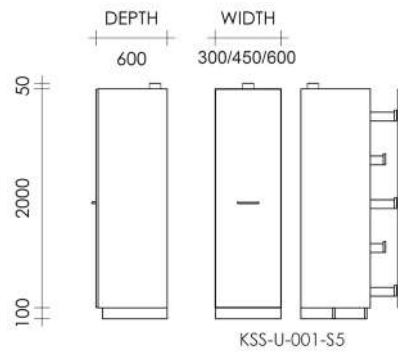
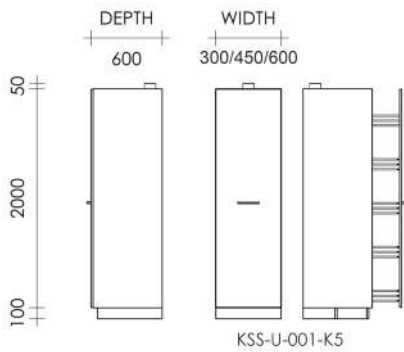
Storage cabinets KSS for chemicals and poison with moveable shelves protected by glass / depth 450 mm and 600 mm



Adjustable shelves with protective glass



Storage cabinets KSS for chemicals and poison with pull-out / depth 600 mm



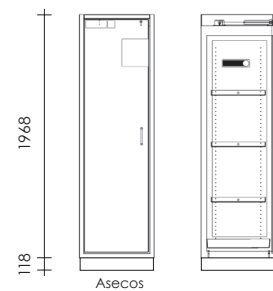
Pull-out door and 5 pc. of moveable wire baskets



Pull-out door and drawers with soft-close



Fire cabinet / depth 617 mm

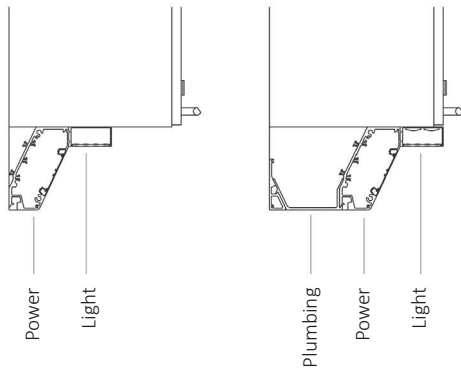


Fire Resistant acid / chemicals cupboard with self closing door



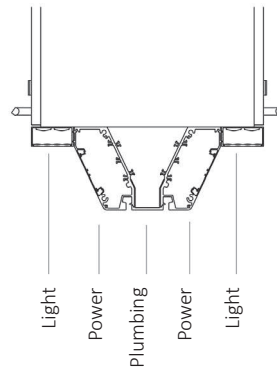
# Product Information

Wall mounted



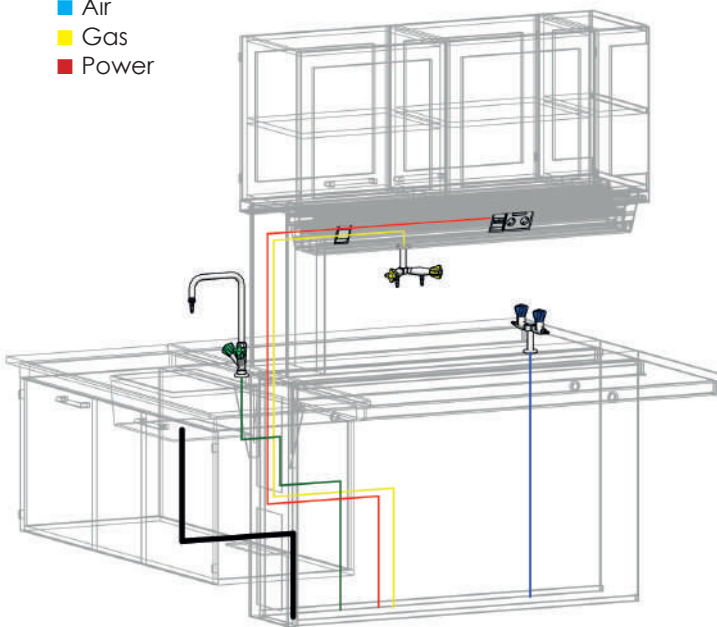
# Service Bridges

Freestanding sections

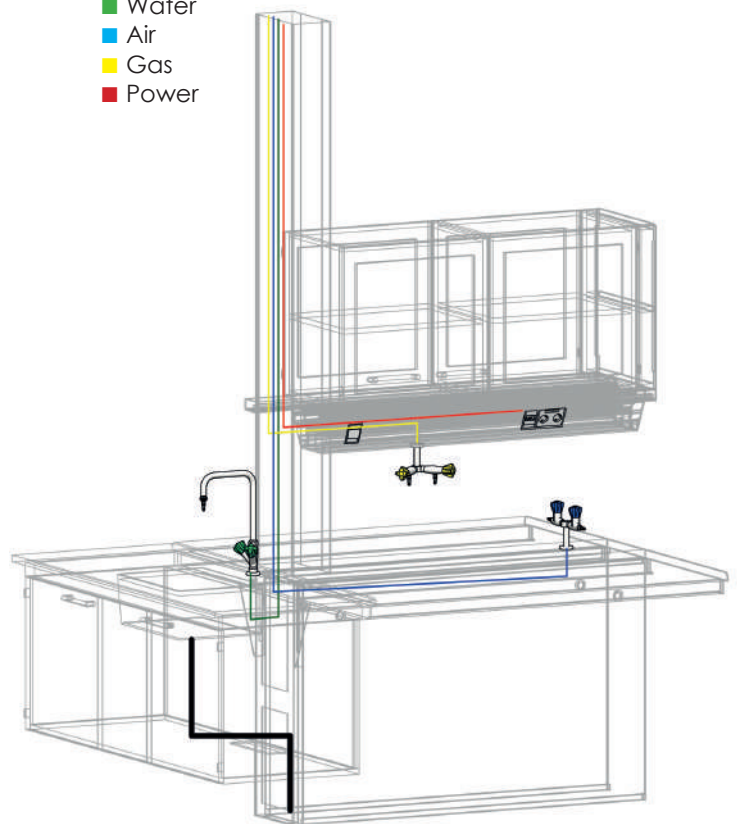


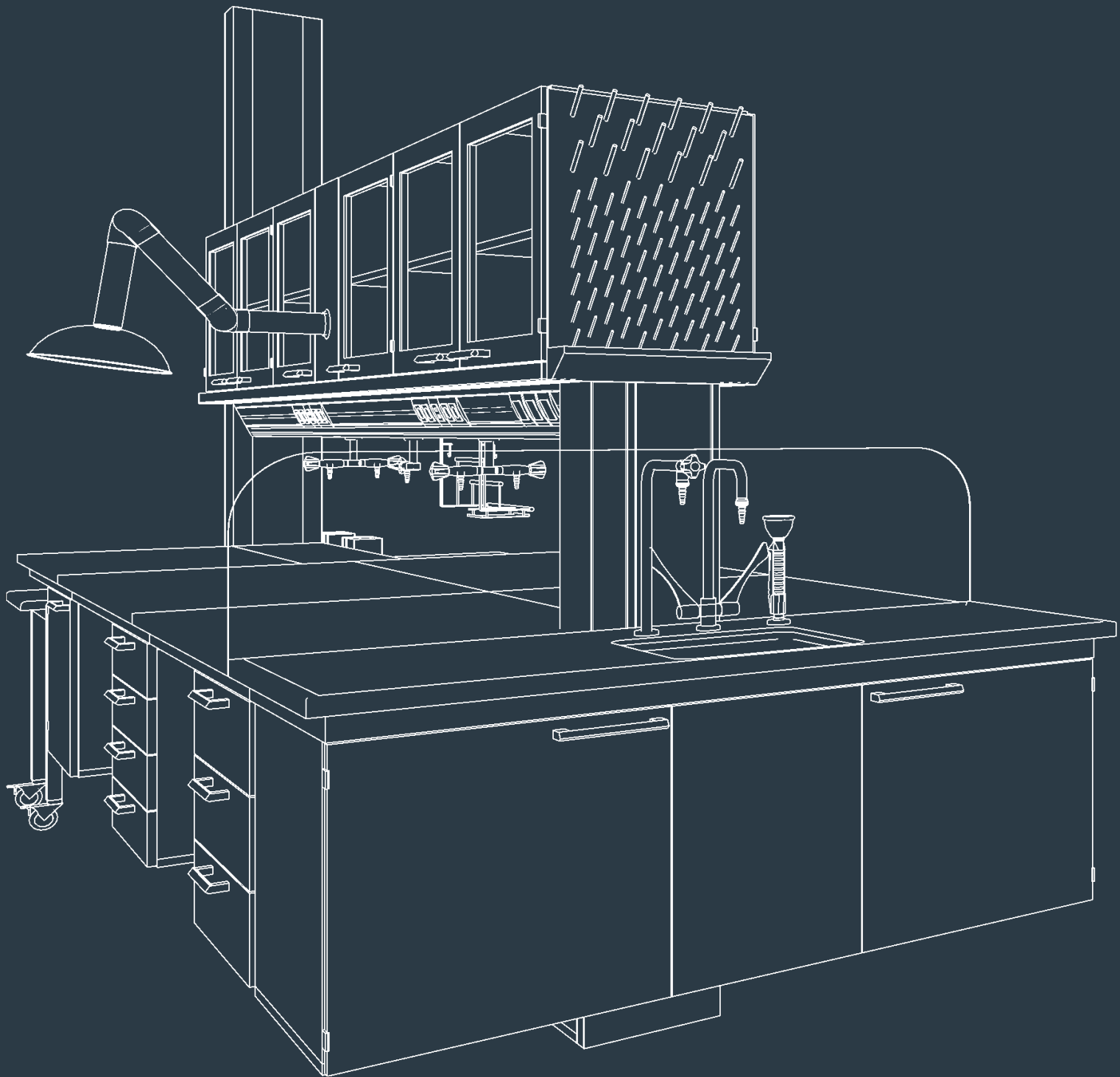
# Installations

- Water
- Air
- Gas
- Power



- Water
- Air
- Gas
- Power





**labmodul**

Valhøjs Alle 190, DK-2610 Rødovre, Tlf. +45 70 21 21 89